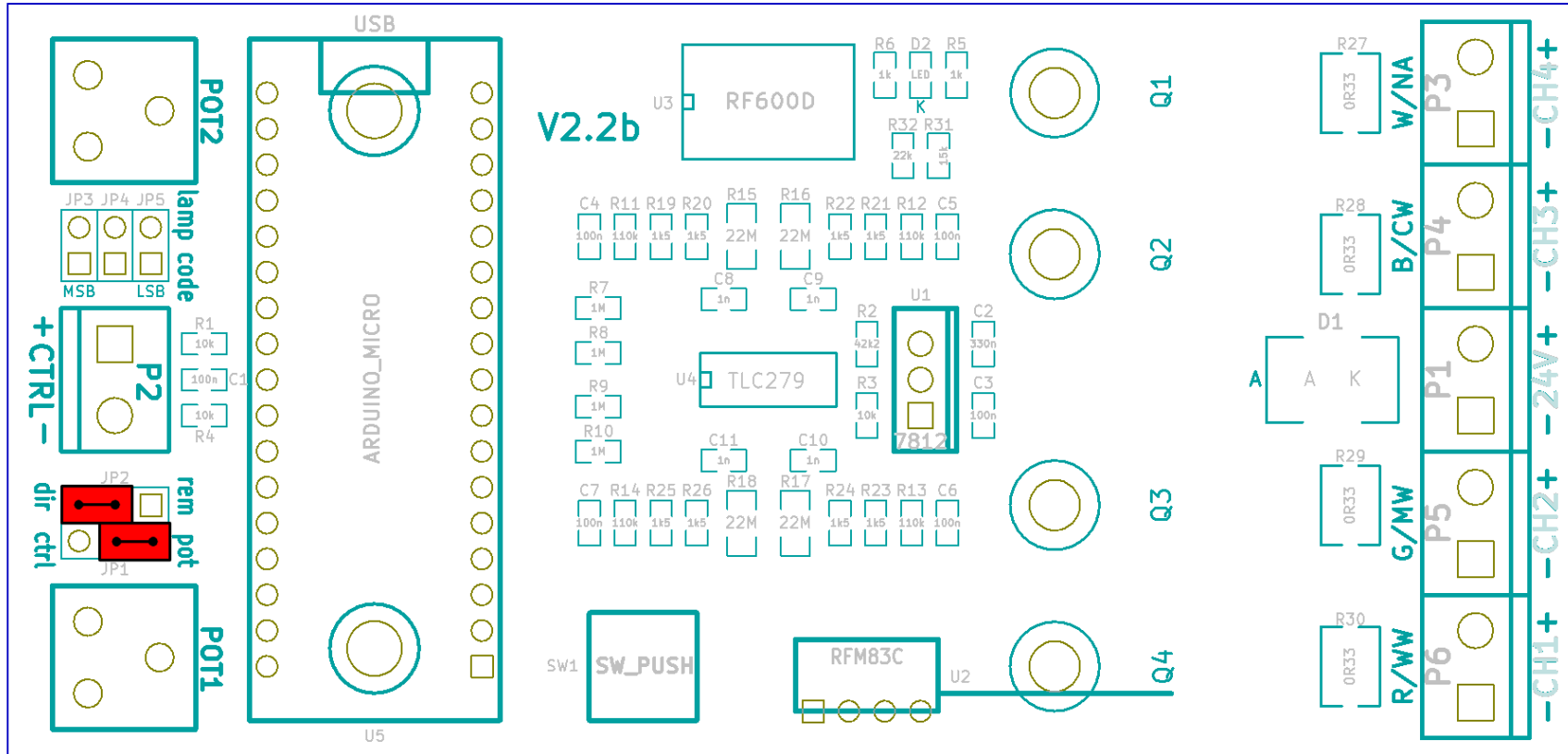


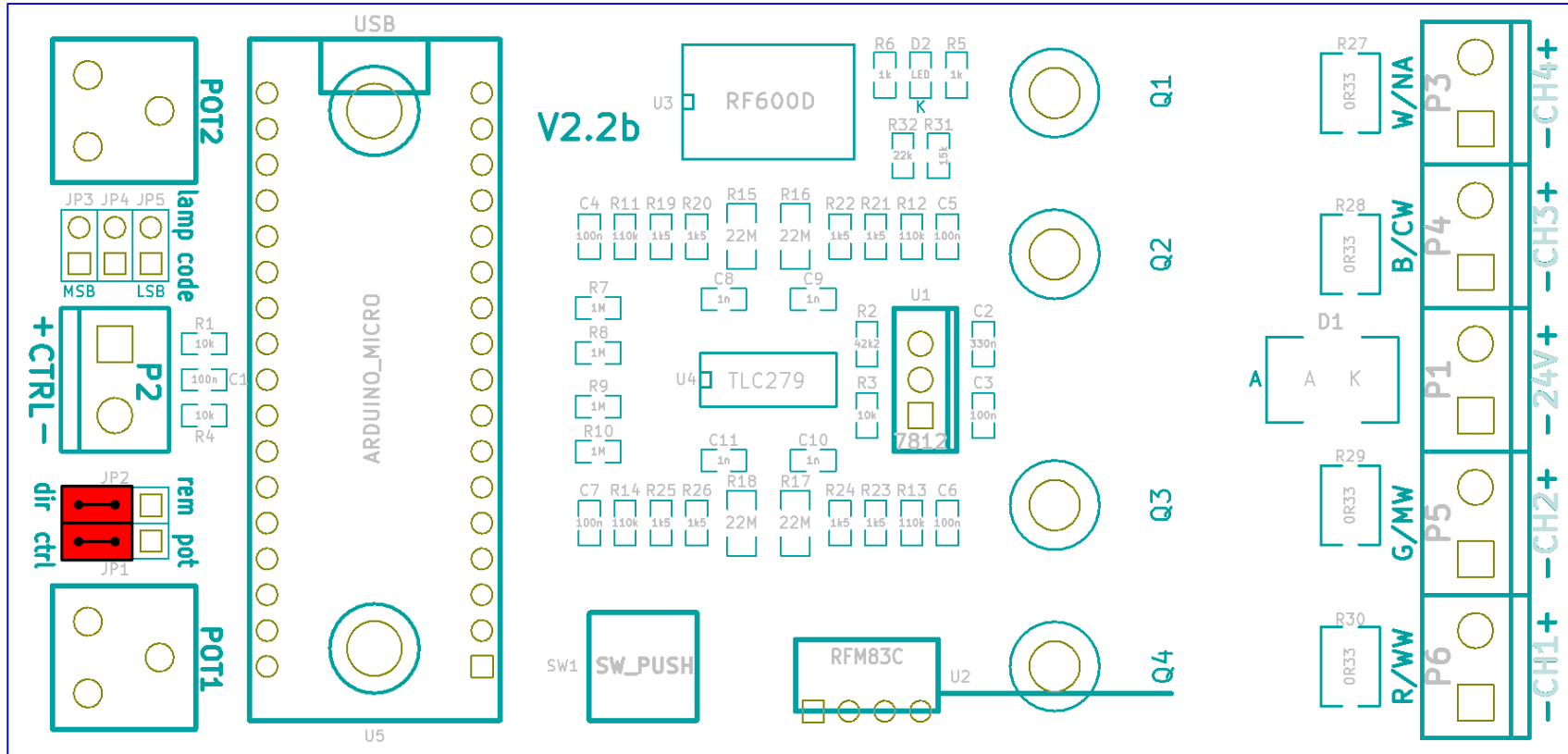
Jumpersettings LED controller V2.2b

Direct potmeter control	Pag 2
Direct 0-10V external control	Pag 3
Remote mode	Pag 4
Lampcode settings	Pag 5 t/m 12

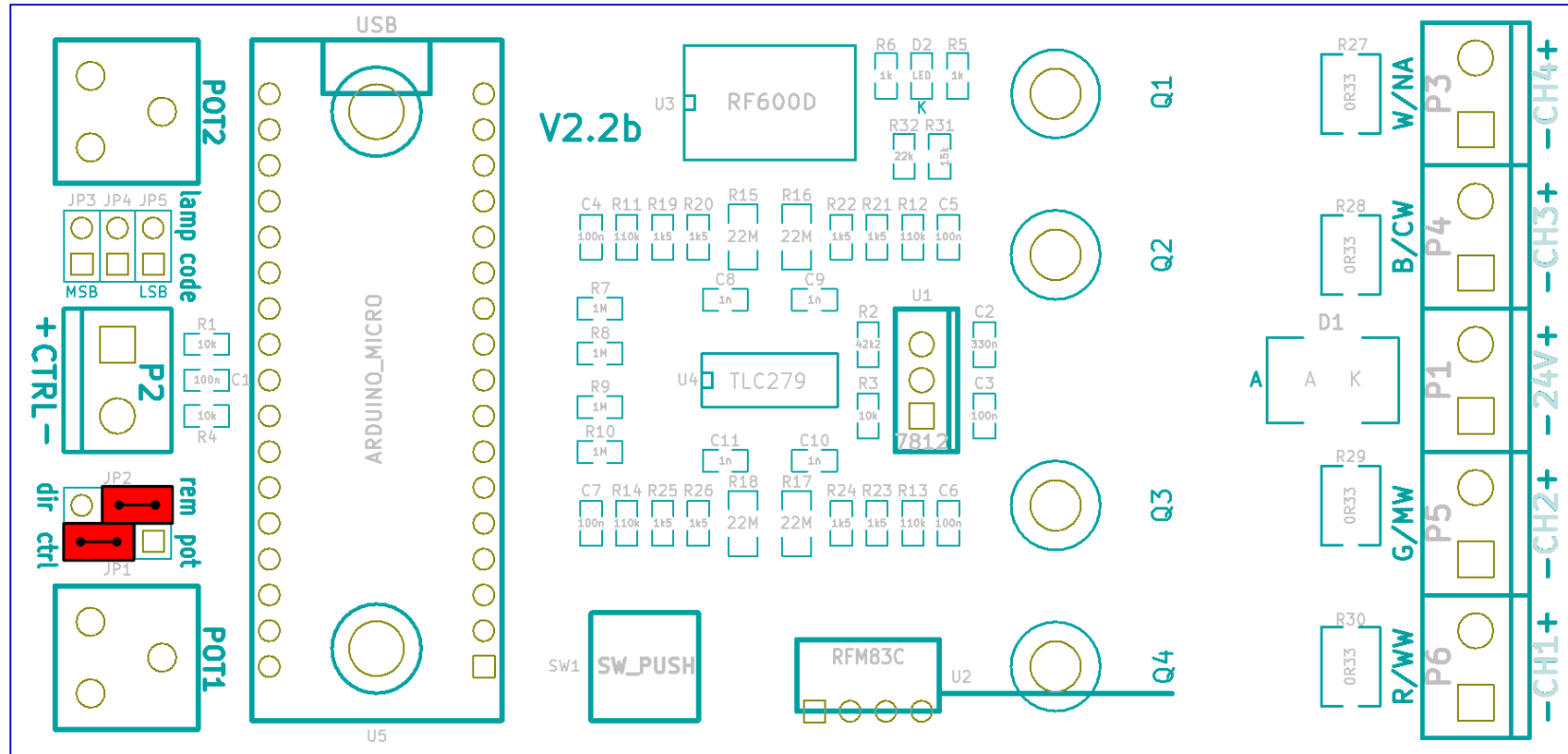
direct potmeter control



direct 0-10V external control

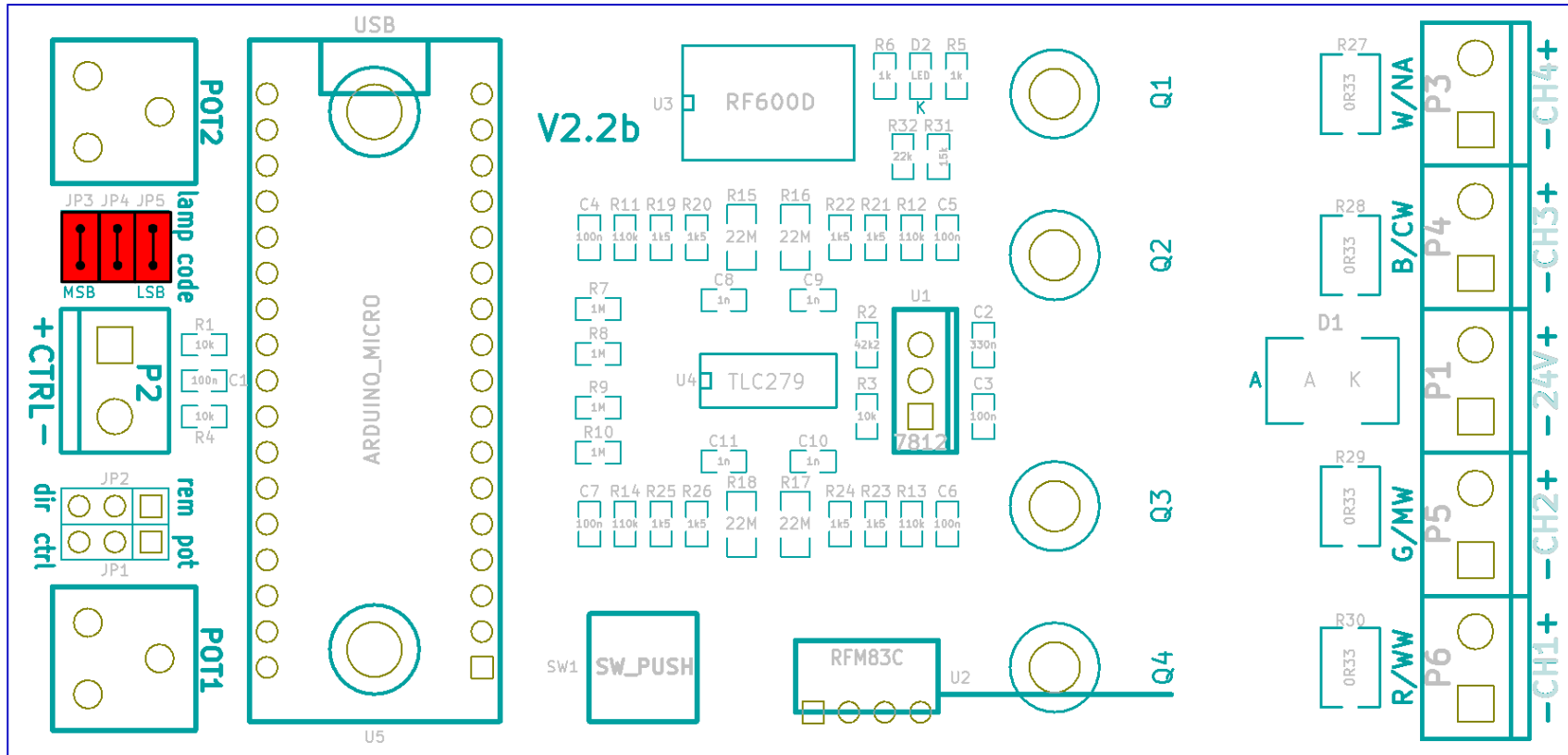


remote control

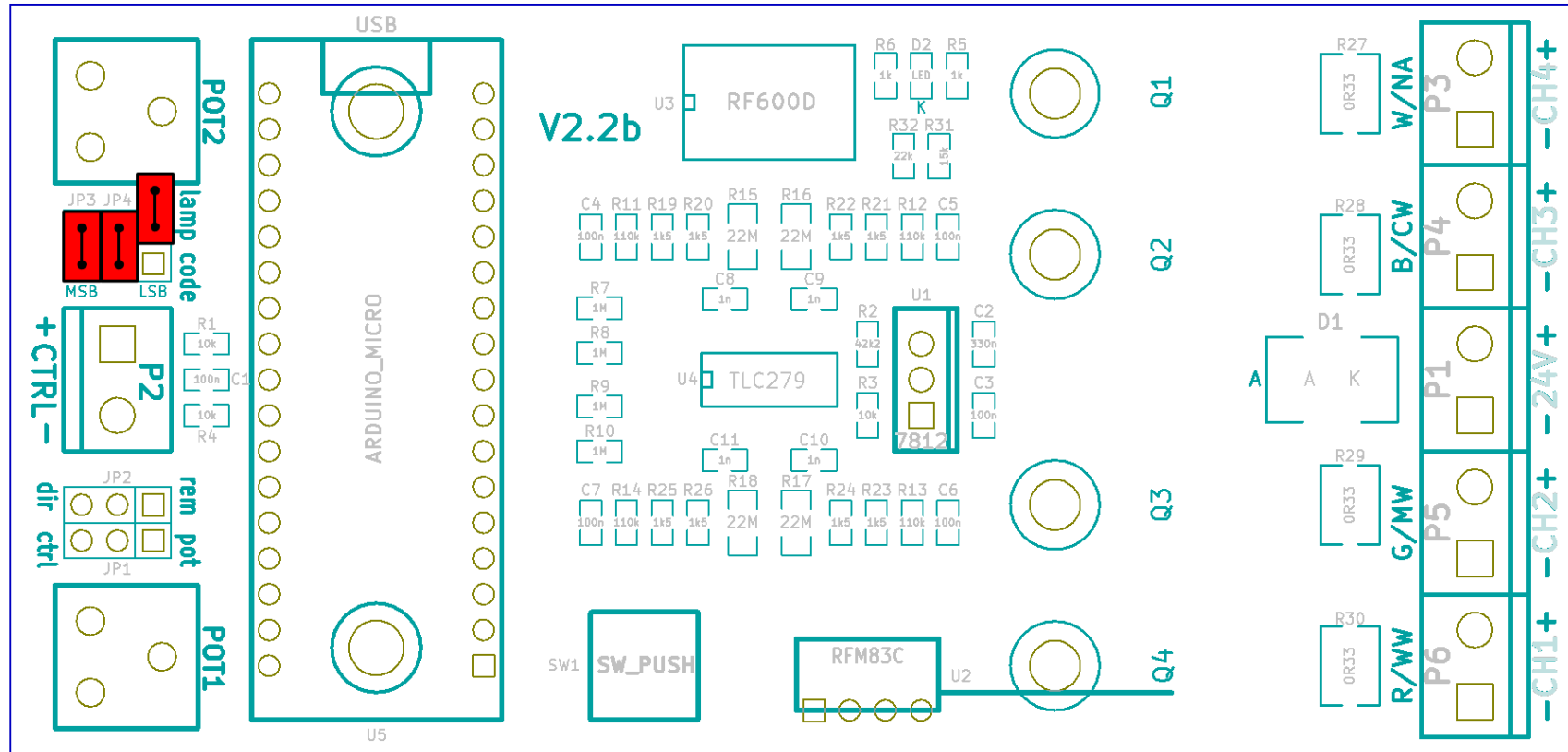


note: JP1 position (pot/ctrl) irrelevant

lampcode 000 TwiLight 1m

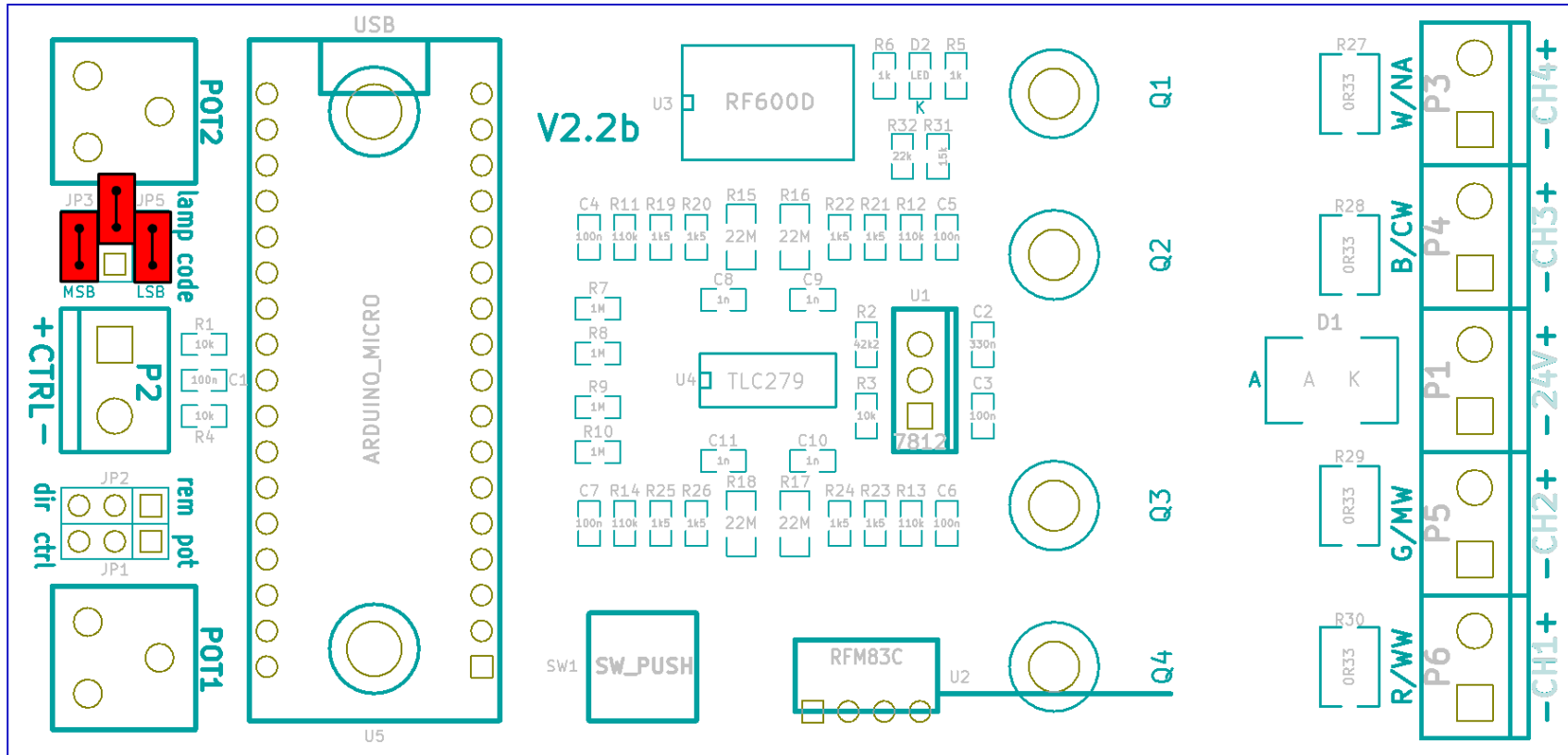


lamcode 001 TwiLight 1.5m



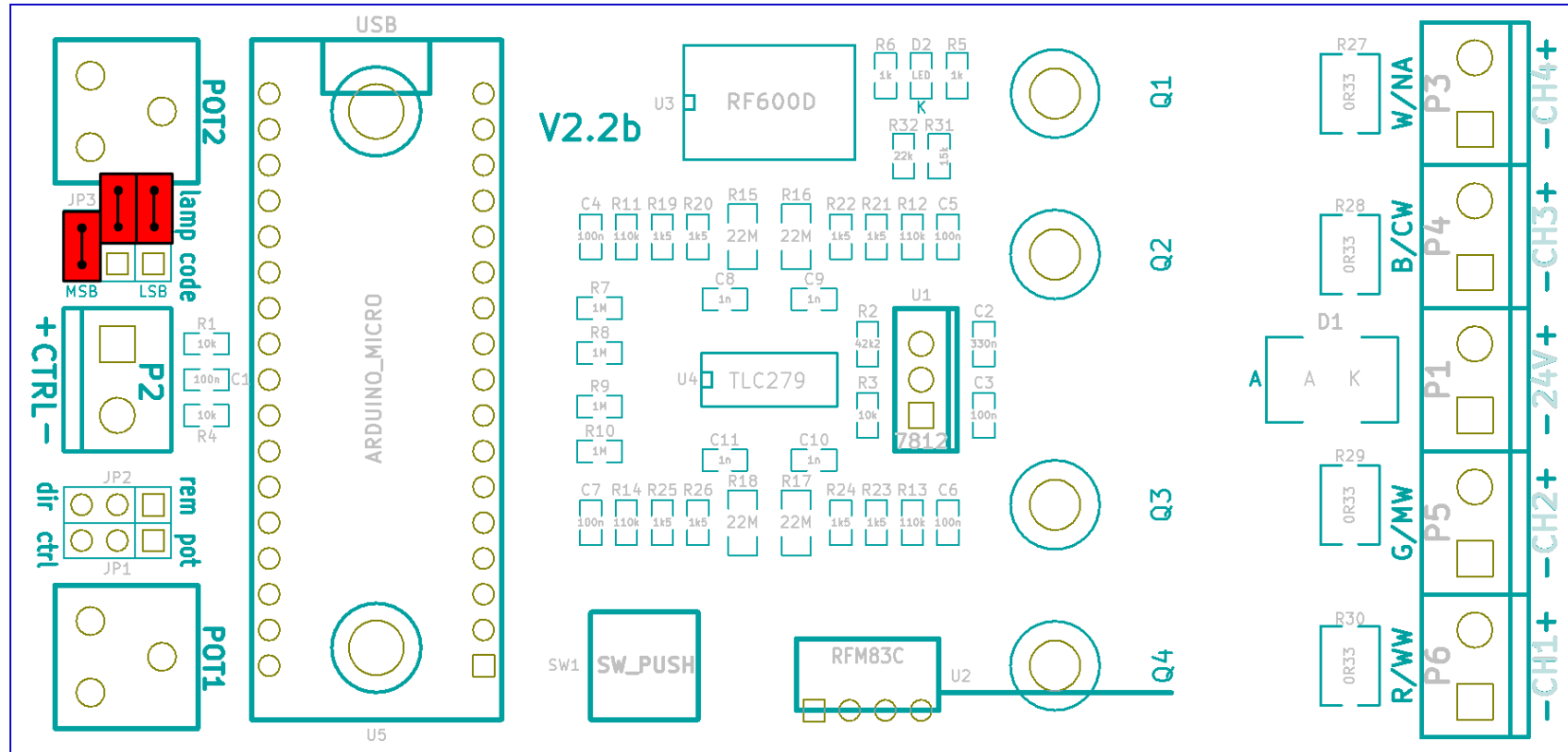
note: JP5 does not make contact, either leave at one pin or leave out

lamcode 010 TwiLight 2m



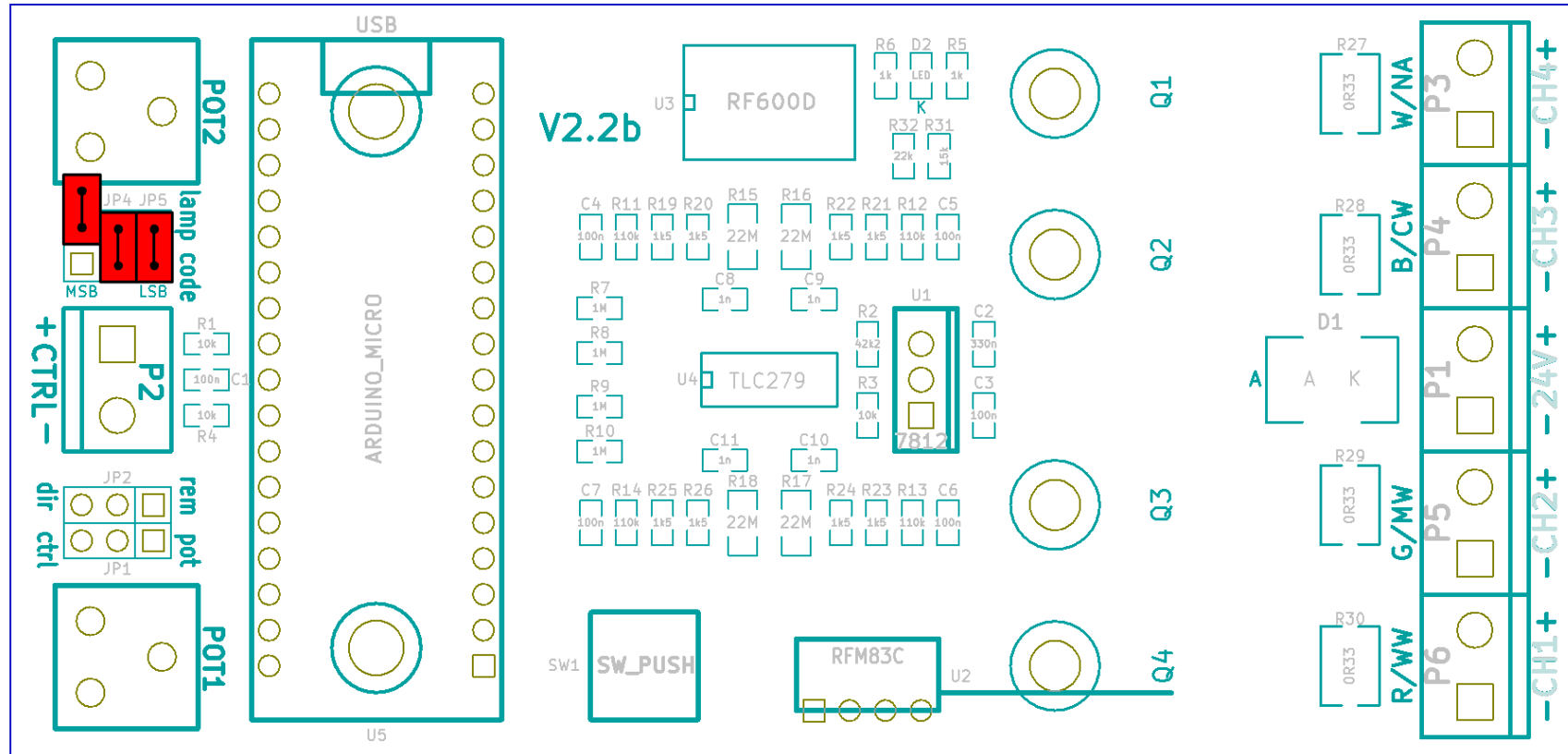
**note: JP4 does not make contact,
either leave at one pin or leave out**

lamcode 011 TestLamp



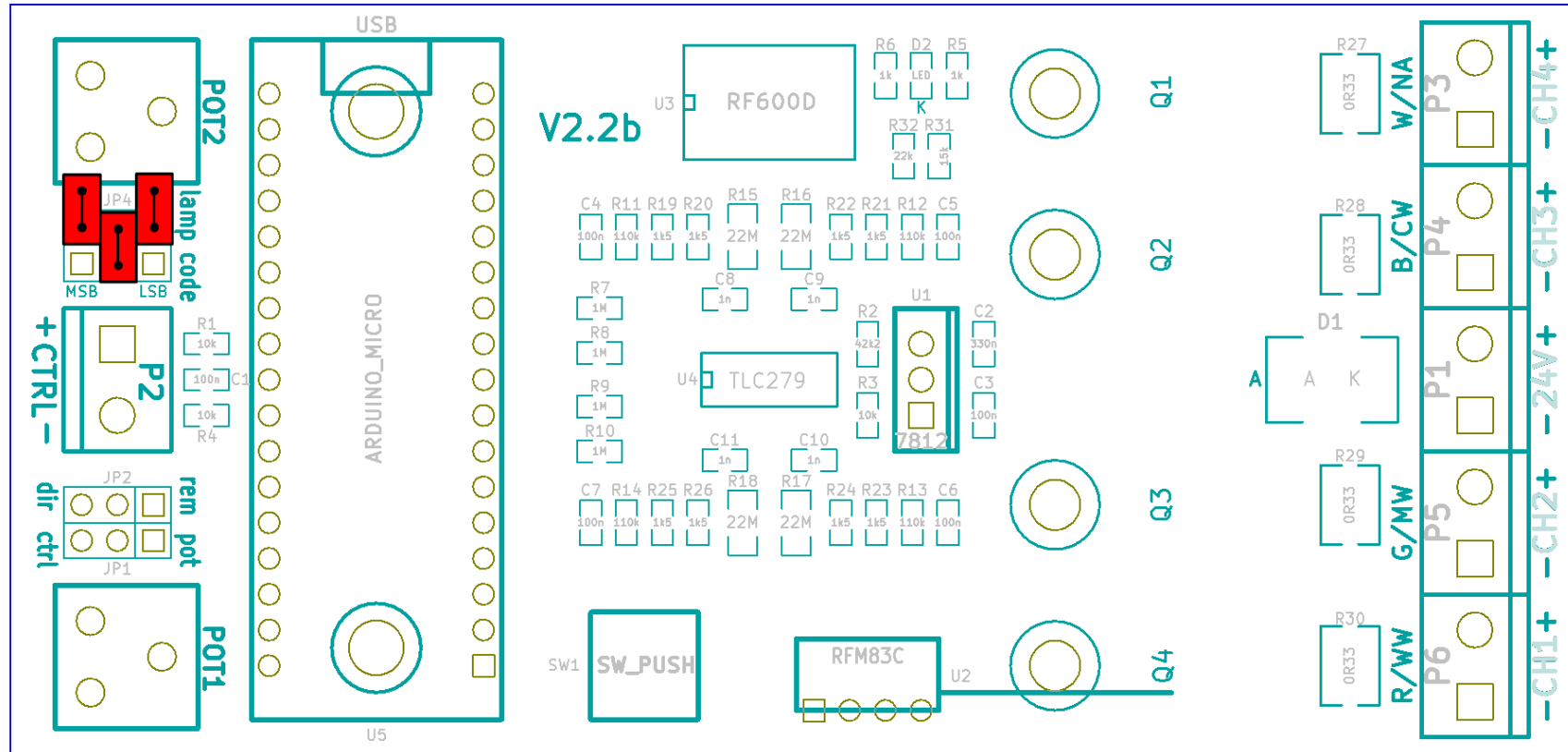
note: JP4, JP5 don't make contact, either leave at one pin or leave out

lampcode 100 TriLight 1m



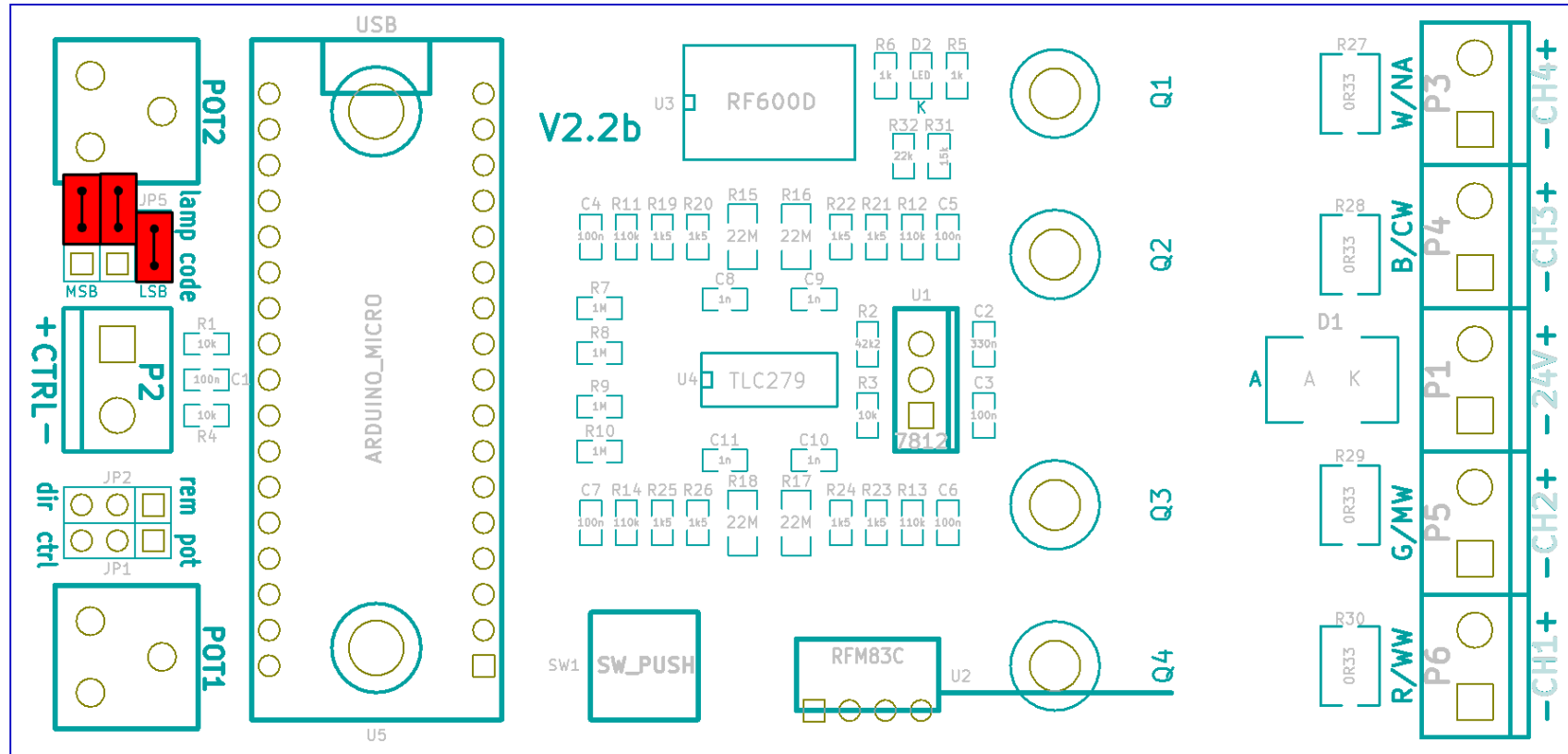
**note: JP3 does not make contact,
either leave at one pin or leave out**

lamcode 101 TriLight 1.5m



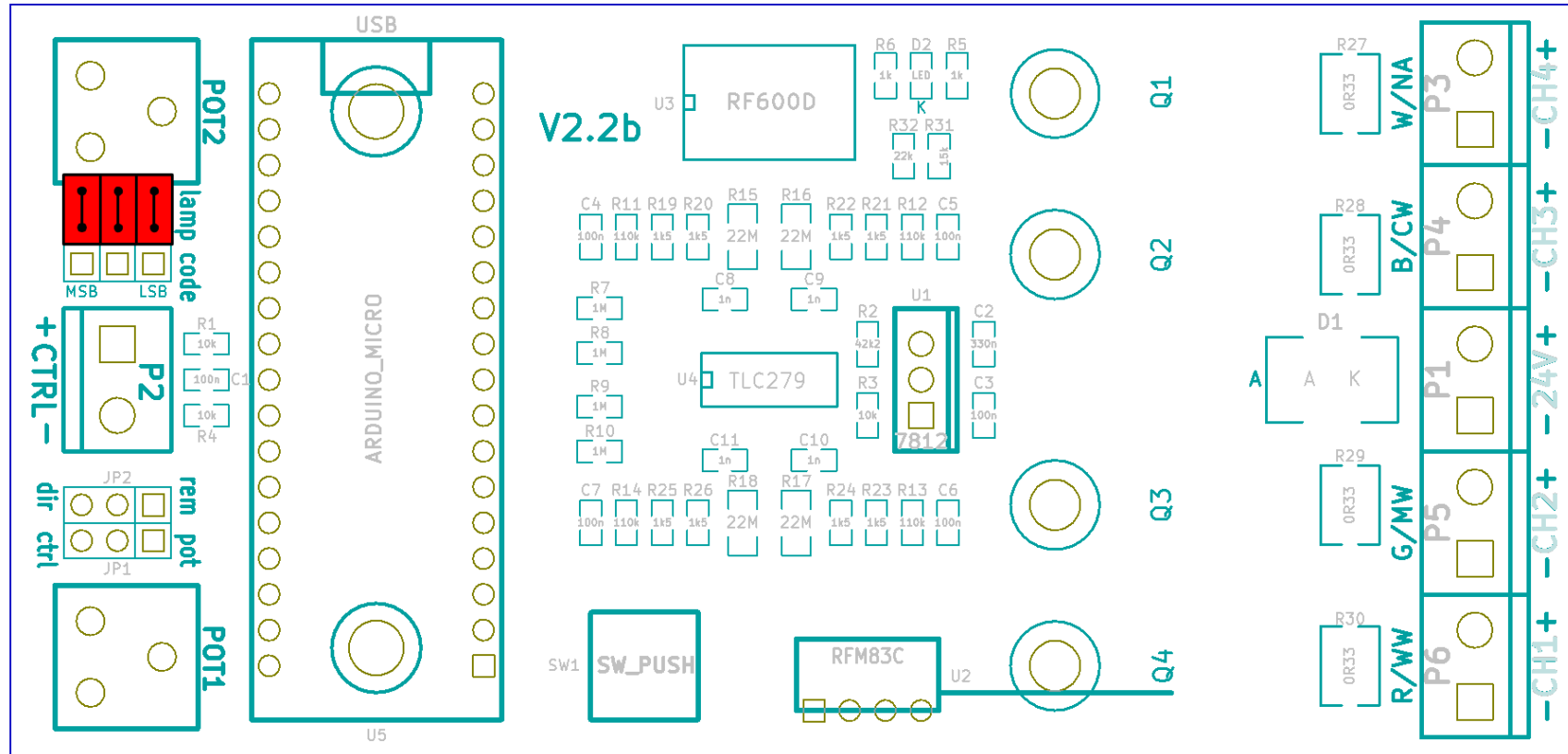
note: JP3, JP5 don't make contact, either leave at one pin or leave out

lampcode 110 TriLight 2m



note: JP3, JP4 don't make contact, either leave at one pin or leave out

lampcode 111 Apollo



**note: JP3, JP4, JP5 don't make contact,
either leave at one pin or leave out**